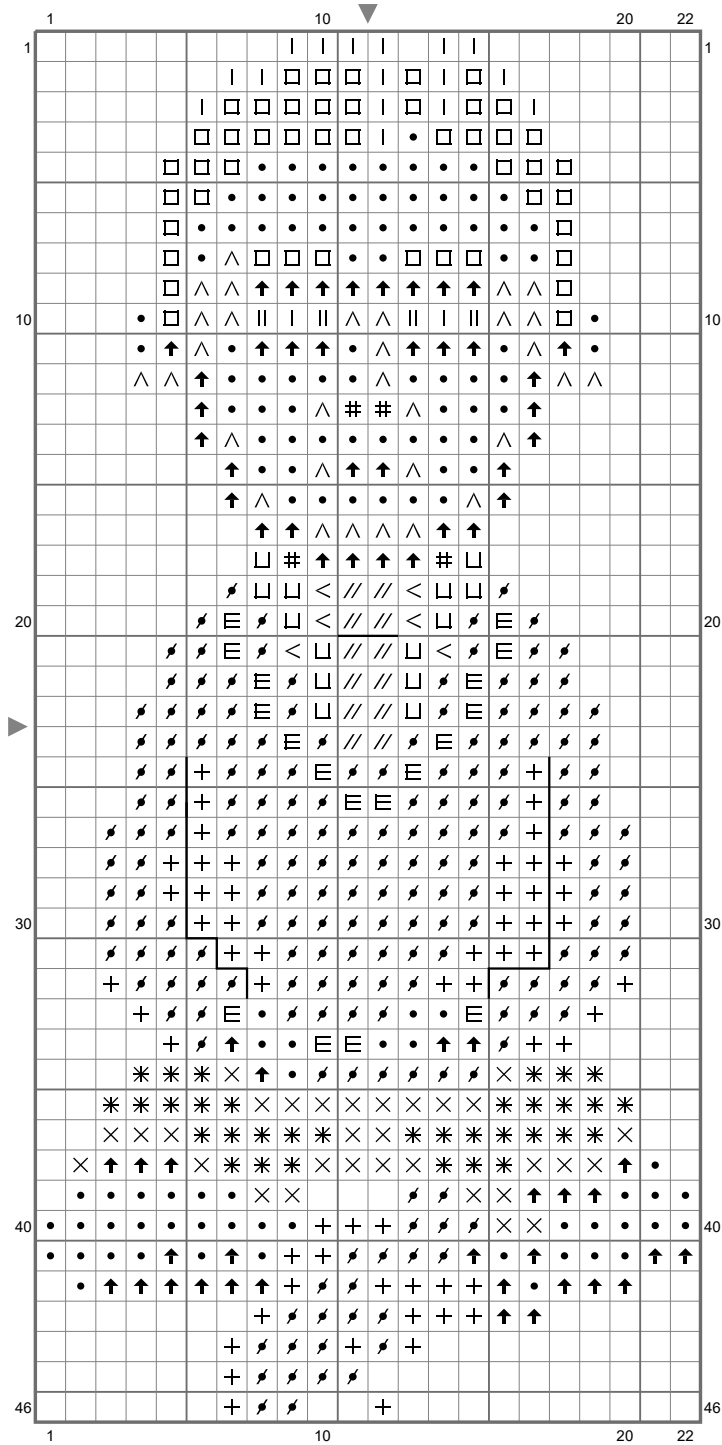


Chuckie

Copyright (C) 2017 Emily Morganti



Chuckie

Copyright (C) 2017 Emily Morganti

Stitch Count: 22w x 46h

Finished Size: 3.10 cm x 6.49 cm (18 ct./inch)

Cloth: Anne Cloth

Cloth's Color: White

of colors: 15 Colors

Color Table (DMC)

Cross Stitch

	BLANC	(4 ct)
#	300	(4 ct)
+	310	(58 ct)
*	311	(34 ct)
<	318	(6 ct)
×	336	(31 ct)
⊏	453	(14 ct)
	801	(18 ct)
↗	823	(187 ct)
≡	931	(18 ct)
□	938	(47 ct)
^	976	(31 ct)
//	3777	(12 ct)
↑	3826	(65 ct)
•	3827	(120 ct)

Backstitch

↖	310	(2 ct)
↖	931	(20 ct)

Comment

Thimbleweed Park cross stitch chart created by Emily Morganti (<http://www.emilymorganti.com/thimblecharts>).

This free pattern may not be used for commercial purposes.

In a town like Thimbleweed Park a dead body is the least of your problems.

Learn more at: <http://www.thimbleweedpark.com>