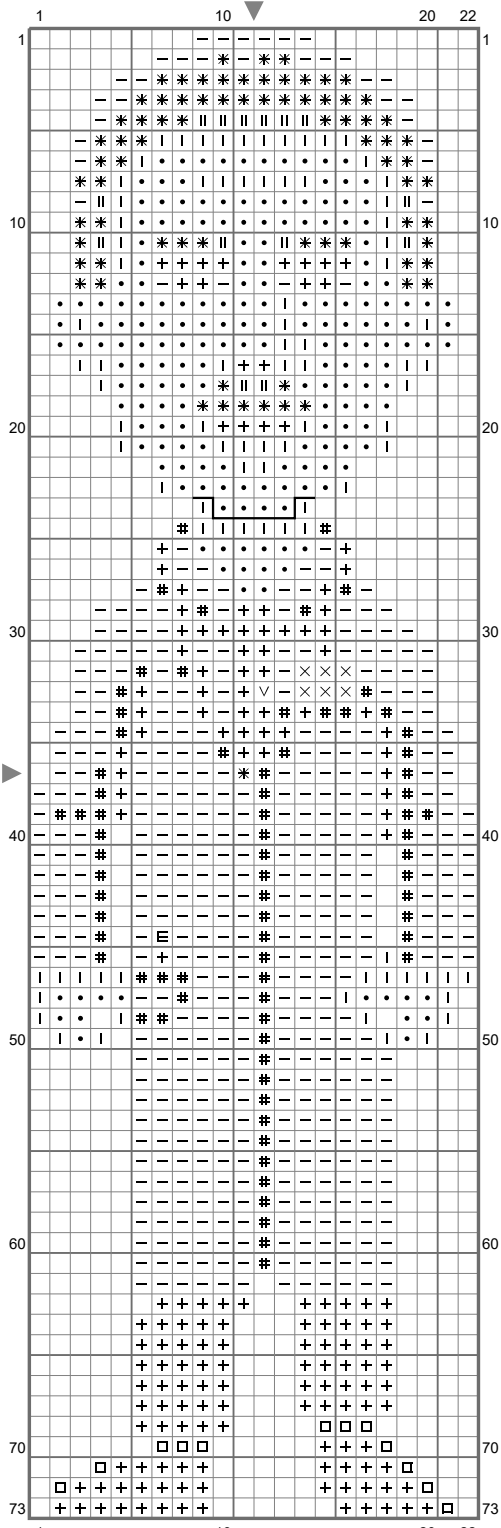


Coroner



(This chart is printed using KG-Chart LE for Cross Stitch.)

Coroner

Stitch Count: 22w x 73h
Finished Size: 3.10 cm x 10.30 cm (18 ct./inch)
Cloth: Anne Cloth
Cloth's Color: White
of colors: 11 Colors

Color Table (DMC)

Cross Stitch

—	B5200	(466 ct)
+	310	(172 ct)
•	632	(195 ct)
	646	(14 ct)
✳	648	(76 ct)
∇	725	(1 ct)
I	839	(88 ct)
#	841	(74 ct)
×	3012	(6 ct)
□	3799	(12 ct)
E	3842	(1 ct)

Backstitch

↵	310	(5 ct)
---	-----	--------

Comment

Thimbleweed Park cross stitch chart created by Emily Morganti (<http://www.emilymorganti.com/thimblecharts>).
This free pattern may not be used for commercial purposes.

In a town like Thimbleweed Park a dead body is the least of your problems.
Learn more at: <http://www.thimbleweedpark.com>