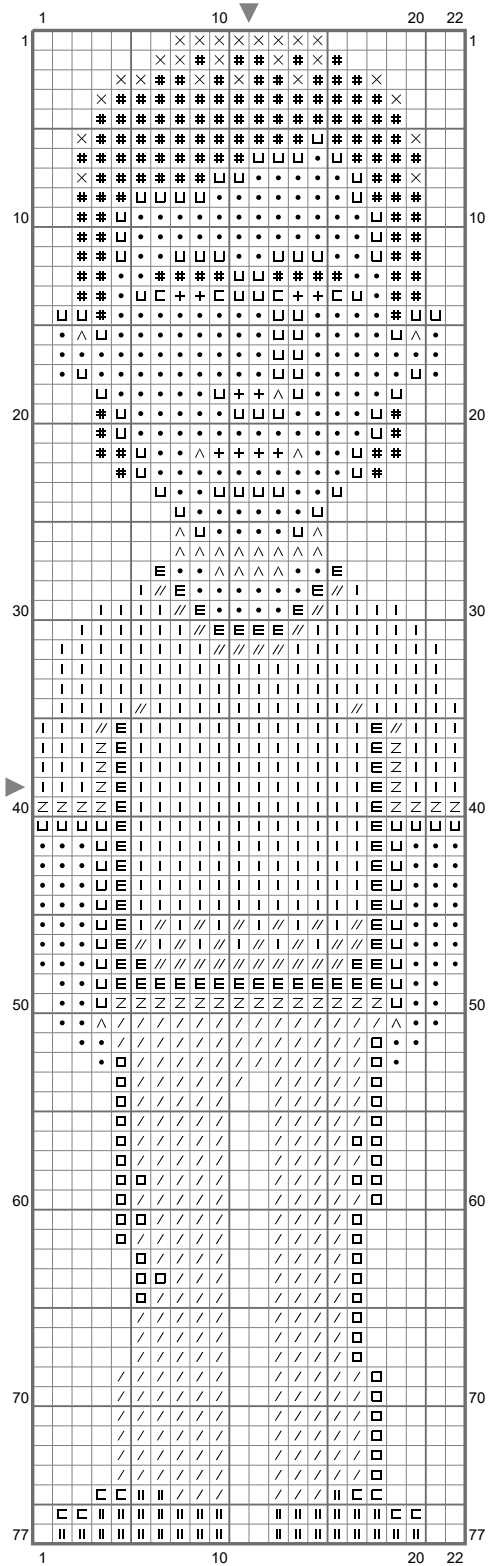


# Gary Winnick



(This chart is printed using KG-Chart LE for Cross Stitch.)

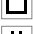

# Gary Winnick

Stitch Count: 22w x 77h  
Finished Size: 3.10 cm x 10.86 cm (18 ct./inch)  
Cloth: Anne Cloth  
Cloth's Color: White  
# of colors: 14 Colors

## Color Table (DMC)

---

### Cross Stitch

	BLANC	(12 ct)
	310	(10 ct)
	333	(37 ct)
	336	(246 ct)
	433	(21 ct)
	434	(98 ct)
	452	(33 ct)
	791	(28 ct)
	792	(52 ct)
	938	(25 ct)
	3064	(241 ct)
	3371	(125 ct)
	3746	(252 ct)
	3842	(41 ct)

## Comment

---

Thimbleweed Park cross stitch chart created by Emily Morganti (<http://www.emilymorganti.com/thimblecharts>).  
This free pattern may not be used for commercial purposes.

In a town like Thimbleweed Park a dead body is the least of your problems.  
Learn more at: <http://www.thimbleweedpark.com>