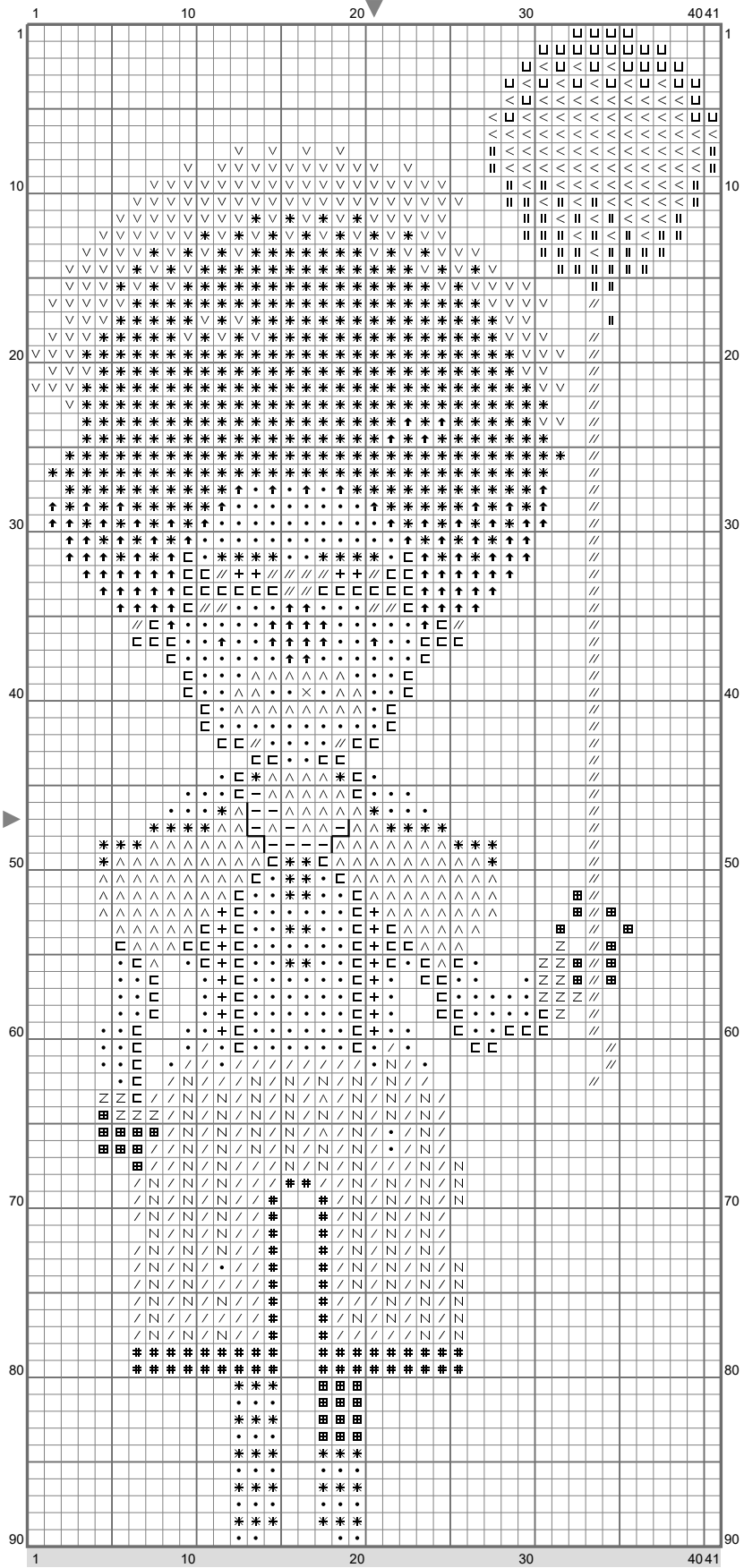
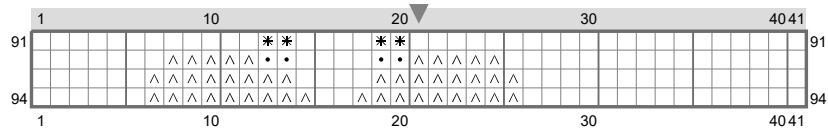


# Ransome



# Ransome



Stitch Count: 41w x 94h  
 Finished Size: 5.78 cm x 13.26 cm (18 ct./inch)  
 Cloth: Linen  
 Cloth's Color: White  
 # of colors: 18 Colors

## Color Table (DMC)

### Cross Stitch

+	310	(20 ct)
↑	347	(95 ct)
✳	349	(457 ct)
△	355	(184 ct)
⊞	444	(102 ct)
#	680	(56 ct)
<	718	(92 ct)
/	783	(170 ct)
∇	900	(159 ct)
	917	(40 ct)
▣	950	(31 ct)
◻	3072	(106 ct)
⊔	3607	(31 ct)
—	3685	(10 ct)
▤	3773	(14 ct)
×	3799	(1 ct)
•	3865	(252 ct)
//	3866	(62 ct)

### Backstitch

↙	3799	(6 ct)
---	------	--------

## Comment

Thimbleweed Park cross stitch chart created by Emily Morganti (<http://www.emilymorganti.com/thimblecharts>).  
 This free pattern may not be used for commercial purposes.

In a town like Thimbleweed Park a dead body is the least of your problems.  
 Learn more at: <http://www.thimbleweedpark.com>