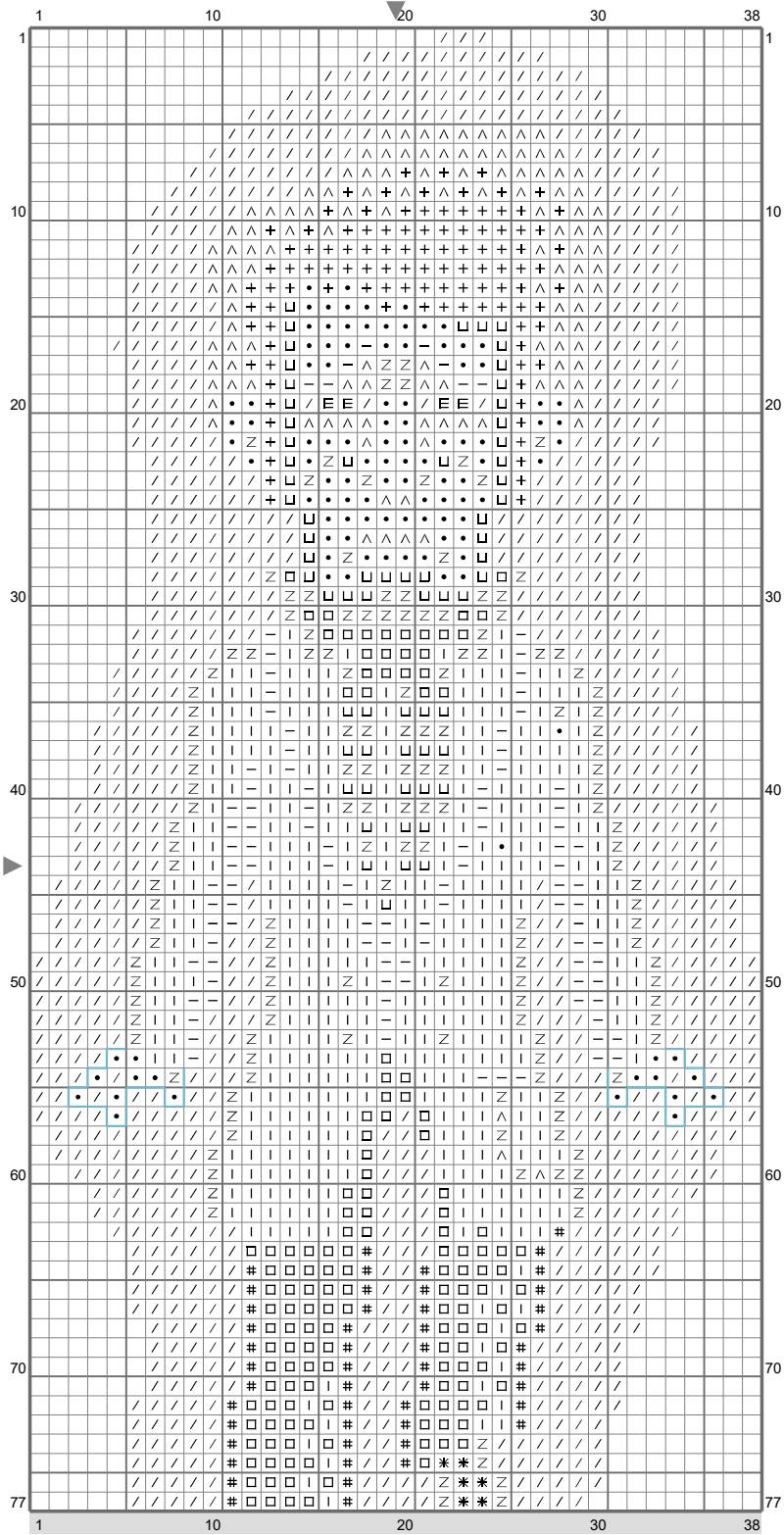
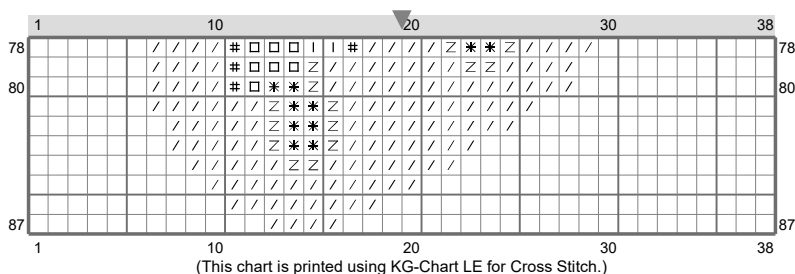


# Virgil



(This chart is printed using KG-Chart LE for Cross Stitch.)

# Virgil



Stitch Count: 38w x 87h  
 Finished Size: 5.36 cm x 12.27 cm (18 ct./inch)  
 Cloth: Anne Cloth  
 Cloth's Color: White  
 # of colors: 12 Colors

### Color Table (DMC)

#### Cross Stitch

△	518	(124 ct)
⊞	519	(53 ct)
∕	813	(165 ct)
⊞	817	(4 ct)
✱	826	(16 ct)
⊞	827	(65 ct)
●	828	(113 ct)
+	3750	(109 ct)
⊞	3760	(402 ct)
⊞	3765	(103 ct)
∕	3841	(1073 ct)
⊞	3842	(155 ct)

#### Backstitch

↙	518	(35 ct)
---	-----	---------

### Comment

For transparent glow effect, stitch the / symbol around Virgil's body as half stitches (only one leg of the cross stitch), using one strand of DMC 3841 and one strand of Kreinik blending filament 094 (Star Blue).

Thimbleweed Park cross stitch chart created by Emily Morganti (<http://www.emilymorganti.com/thimblecharts>). This free pattern may not be used for commercial purposes.

In a town like Thimbleweed Park a dead body is the least of your problems.  
 Learn more at: <http://www.thimbleweedpark.com>