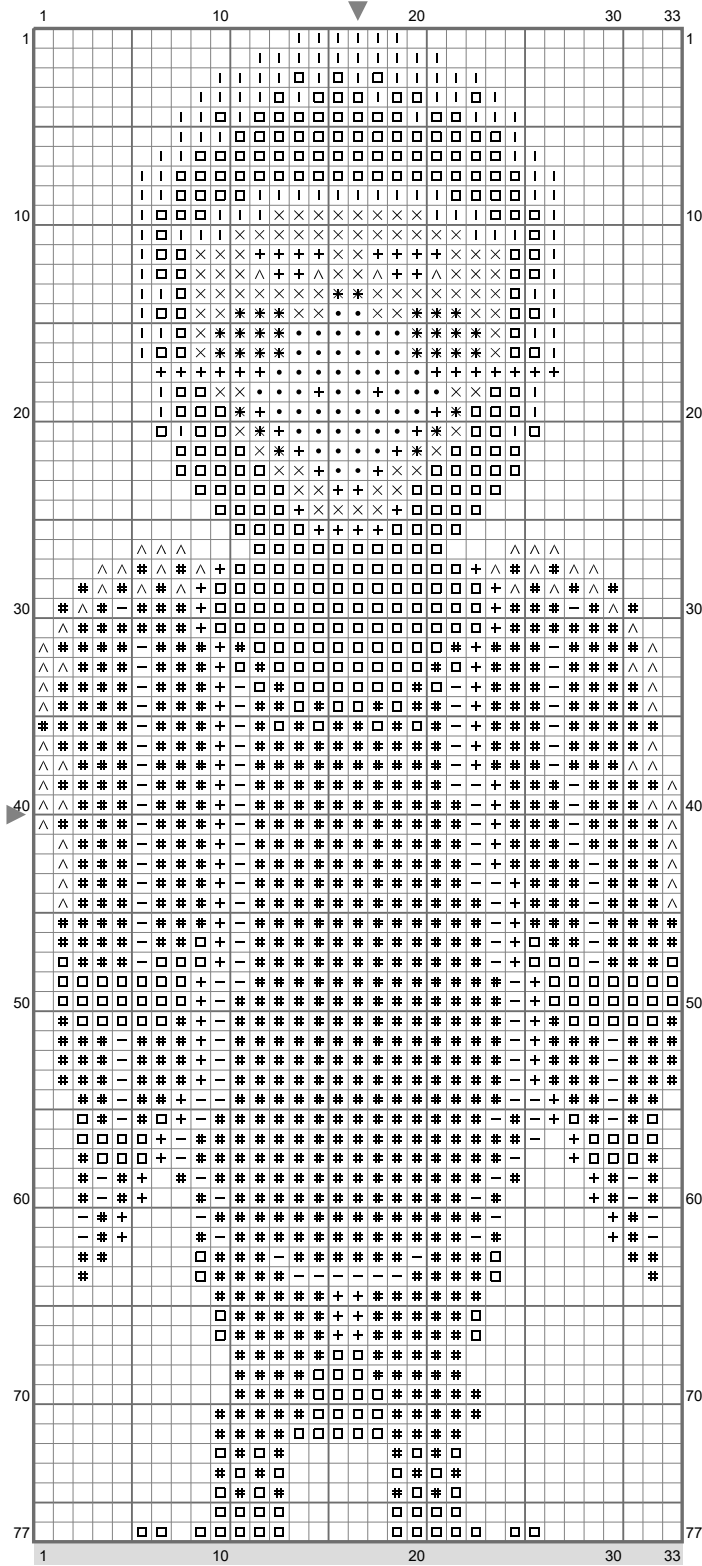
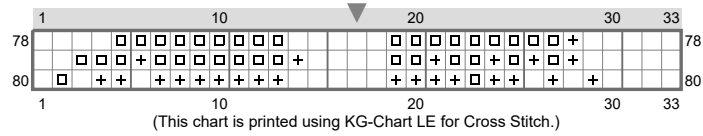


Bigger Pigeon



(This chart is printed using KG-Chart LE for Cross Stitch.)

Bigger Pigeon



Stitch Count: 33w x 80h
 Finished Size: 4.65 cm x 11.28 cm (18 ct./inch)
 Cloth: Anne Cloth
 Cloth's Color: White
 # of colors: 9 Colors

Color Table (DMC)

Cross Stitch

△	B5200	(60 ct)
+	310	(143 ct)
	414	(107 ct)
□	535	(427 ct)
-	646	(126 ct)
#	648	(786 ct)
✱	3064	(30 ct)
●	3072	(50 ct)
×	3862	(82 ct)

Comment

Thimbleweed Park cross stitch chart created by Emily Morganti (<http://www.emilymorganti.com/thimblecharts>).
 This free pattern may not be used for commercial purposes.

In a town like Thimbleweed Park a dead body is the least of your problems.
 Learn more at: <http://www.thimbleweedpark.com>