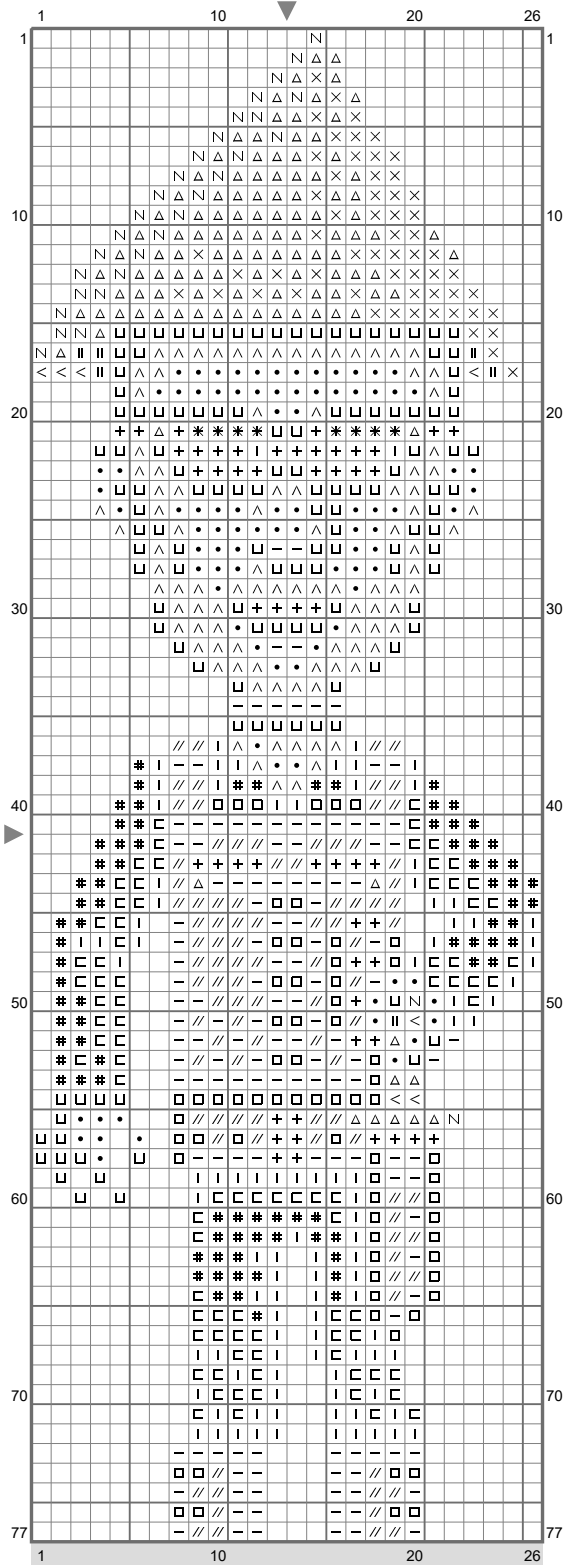
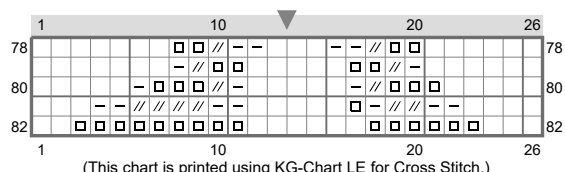


Brett



(This chart is printed using KG-Chart LE for Cross Stitch.)

Brett



Stitch Count: 26w x 82h
 Finished Size: 3.66 cm x 11.57 cm (18 ct./inch)
 Cloth: Anne Cloth
 Cloth's Color: White
 # of colors: 16 Colors

Color Table (DMC)

Cross Stitch

☐	B5200	(31 ct)
+	310	(53 ct)
<	317	(7 ct)
//	829	(108 ct)
*	895	(8 ct)
-	898	(148 ct)
□	938	(99 ct)
I	935	(100 ct)
□	937	(84 ct)
#	469	(85 ct)
×	452	(58 ct)
△	453	(116 ct)
•	3064	(90 ct)
□	3772	(127 ct)
	3799	(6 ct)
∧	3863	(98 ct)

Comment

For sparkly effect in tin foil hat, use one strand of super fine (#1) Kreinik silver Japan thread (001J) w/ two strands of DMC.

Thimbleweed Park cross stitch chart created by Emily Morganti (<http://www.emilymorganti.com/thimblecharts>).

This free pattern may not be used for commercial purposes.

In a town like Thimbleweed Park a dead body is the least of your problems.

Learn more at: <http://www.thimbleweedpark.com>