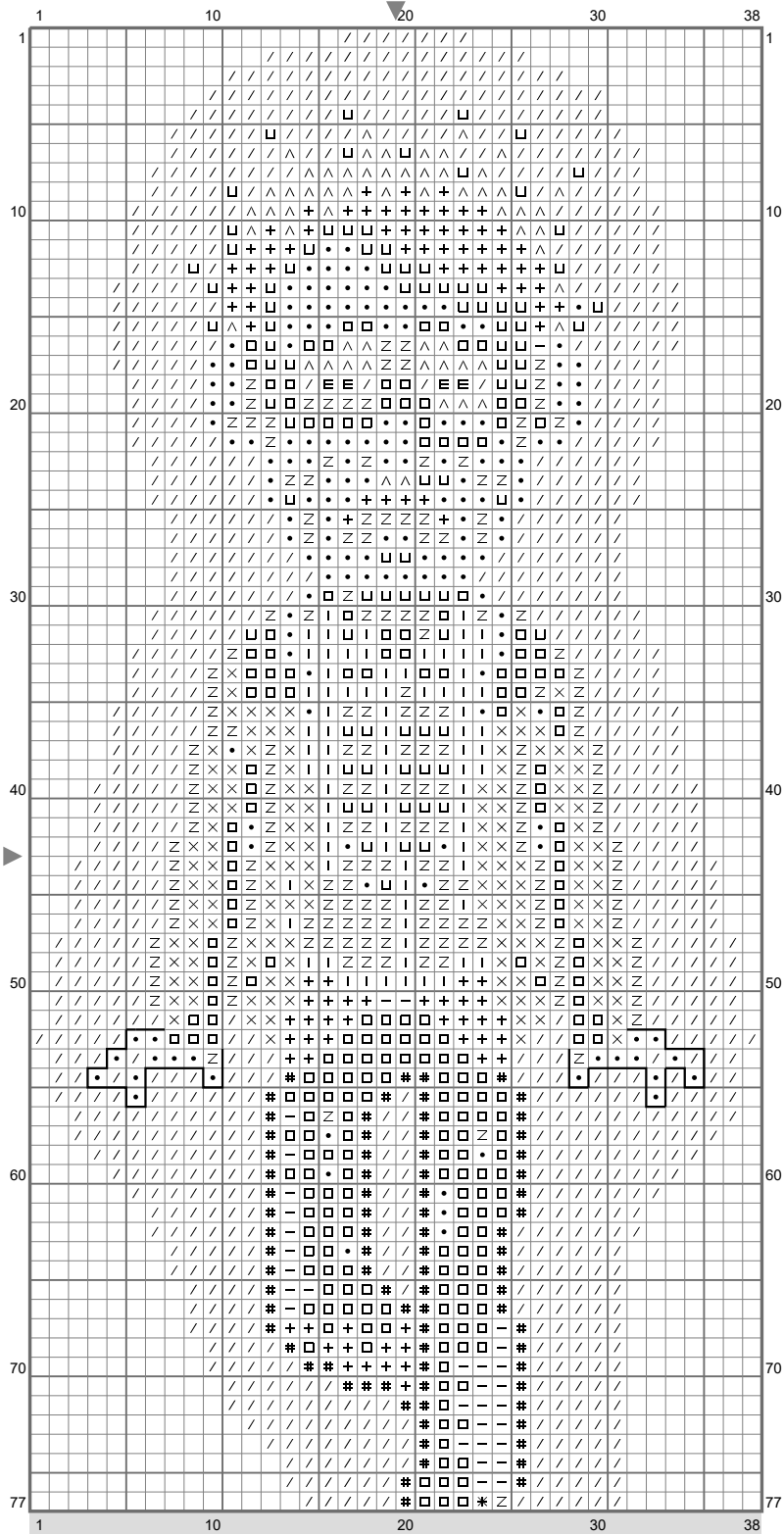
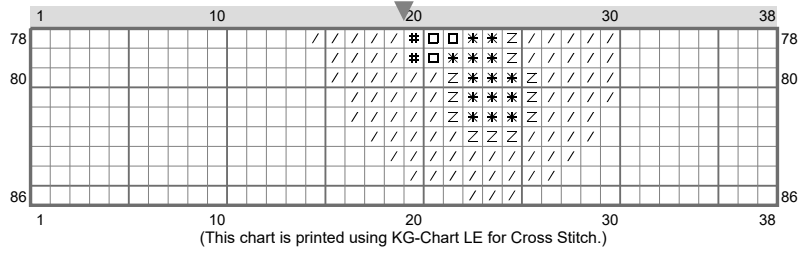


Franklin



(This chart is printed using KG-Chart LE for Cross Stitch.)

Franklin



Stitch Count: 38w x 86h
 Finished Size: 5.36 cm x 12.13 cm (18 ct./inch)
 Cloth: Anne Cloth
 Cloth's Color: White
 # of colors: 13 Colors

Color Table (DMC)

Cross Stitch

△	518	(60 ct)
#	519	(81 ct)
Z	813	(194 ct)
E	817	(4 ct)
X	825	(138 ct)
*	826	(15 ct)
U	827	(88 ct)
•	828	(162 ct)
+	3750	(100 ct)
I	3760	(79 ct)
-	3765	(32 ct)
/	3841	(1025 ct)
□	3842	(234 ct)

Backstitch

L	518	(31 ct)
---	-----	---------

Comment

For transparent glow effect, stitch the / symbol around Franklin's body as half stitches (only one leg of the cross stitch), using one strand of DMC 3841 and one strand of Kreinik blending filament 094 (Star Blue).

Thimbleweed Park cross stitch chart created by Emily Morganti (<http://www.emilymorganti.com/thimblecharts>). This free pattern may not be used for commercial purposes.

In a town like Thimbleweed Park a dead body is the least of your problems.
 Learn more at: <http://www.thimbleweedpark.com>