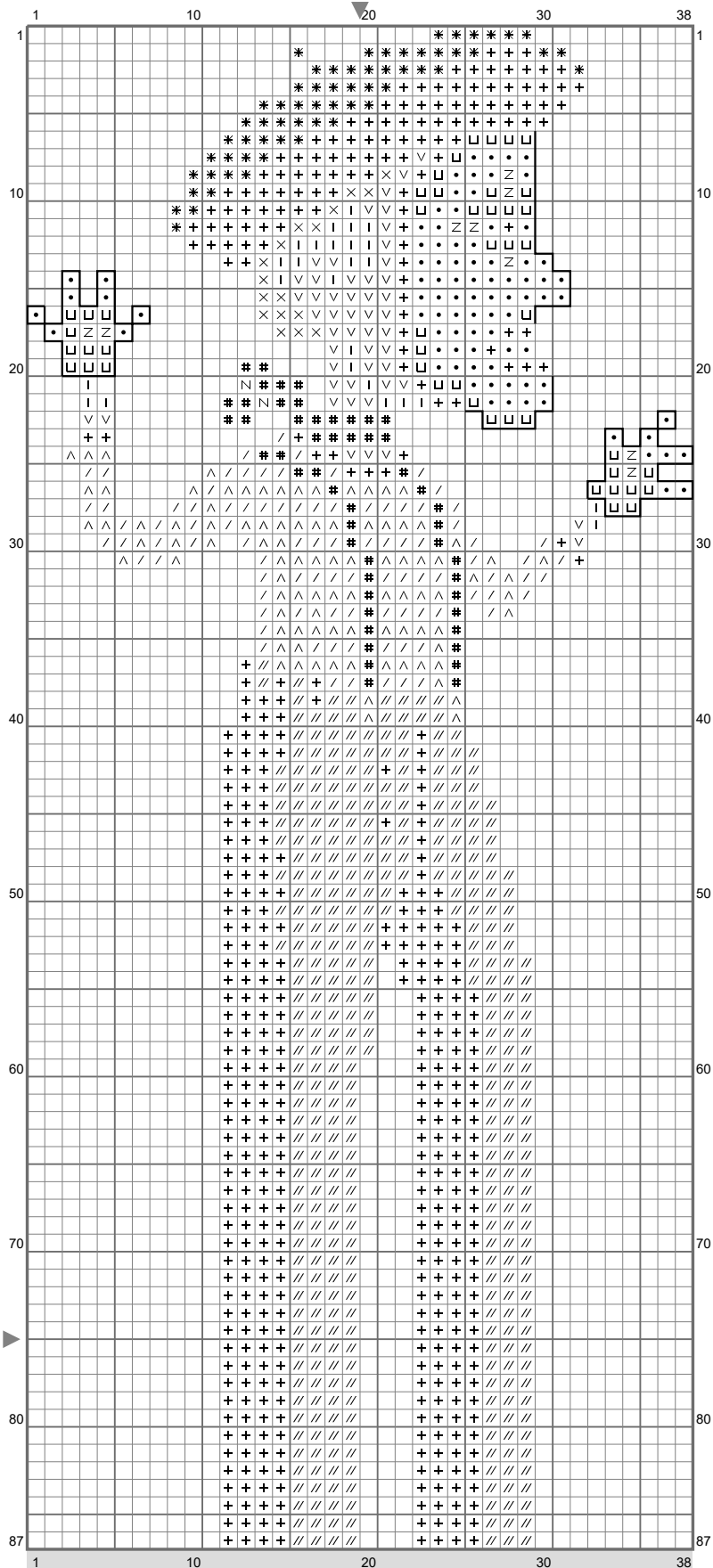


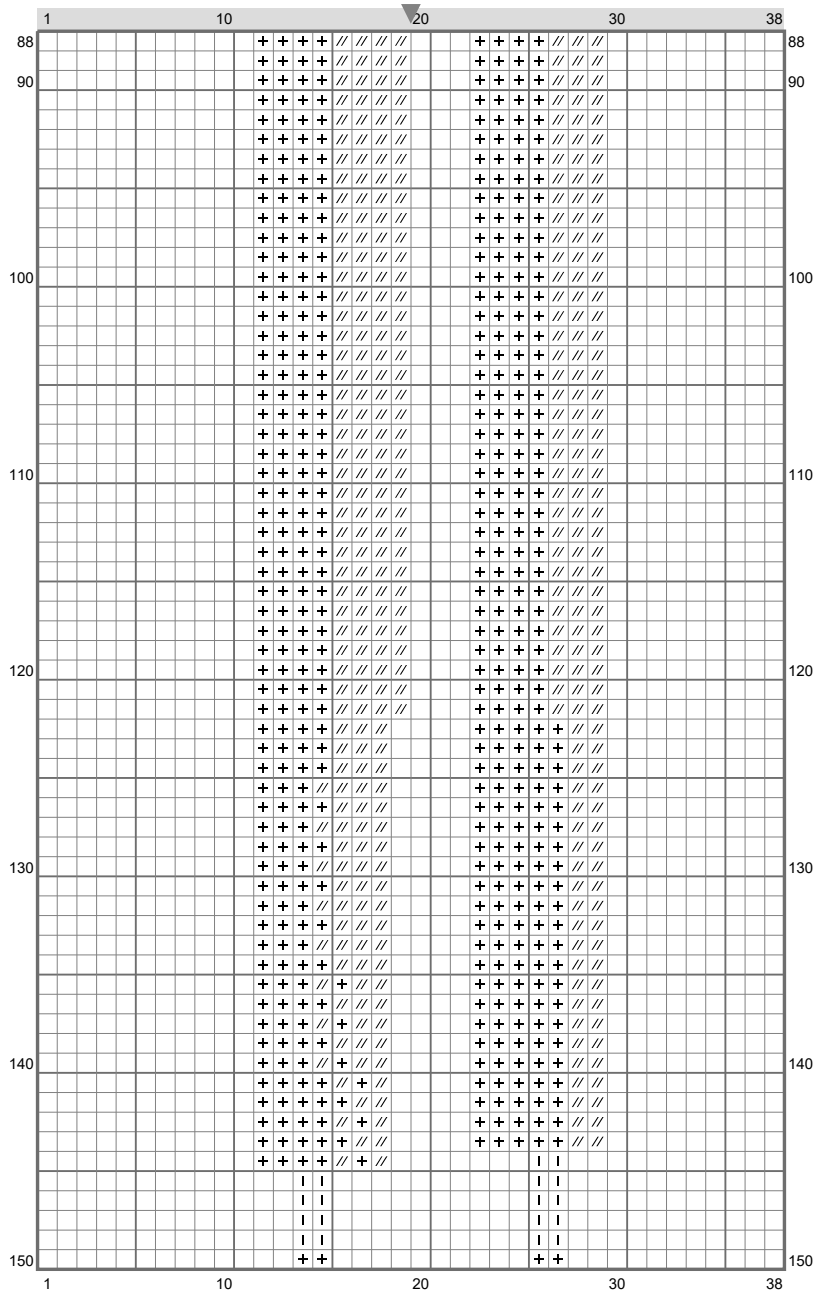
Mime

Copyright (C) 2017 Emily Morganti



Mime

Copyright (C) 2017 Emily Morganti
















Mime

Copyright (C) 2017 Emily Morganti

Stitch Count: 38w x 150h
Finished Size: 5.36 cm x 21.16 cm (18 ct./inch)
Cloth: Anne Cloth
Cloth's Color: White
of colors: 13 Colors

Color Table (DMC)

Cross Stitch

	BLANC	(92 ct)
	310	(969 ct)
	433	(17 ct)
	434	(44 ct)
	606	(51 ct)
	647	(94 ct)
	712	(89 ct)
	739	(47 ct)
	841	(9 ct)
	918	(2 ct)
	3021	(62 ct)
	3064	(50 ct)
	3799	(759 ct)

Backstitch

	841	(91 ct)
---	-----	---------

Comment

Thimbleweed Park cross stitch chart created by Emily Morganti (<http://www.emilymorganti.com/thimblecharts>).
This free pattern may not be used for commercial purposes.

In a town like Thimbleweed Park a dead body is the least of your problems.
Learn more at: <http://www.thimbleweedpark.com>