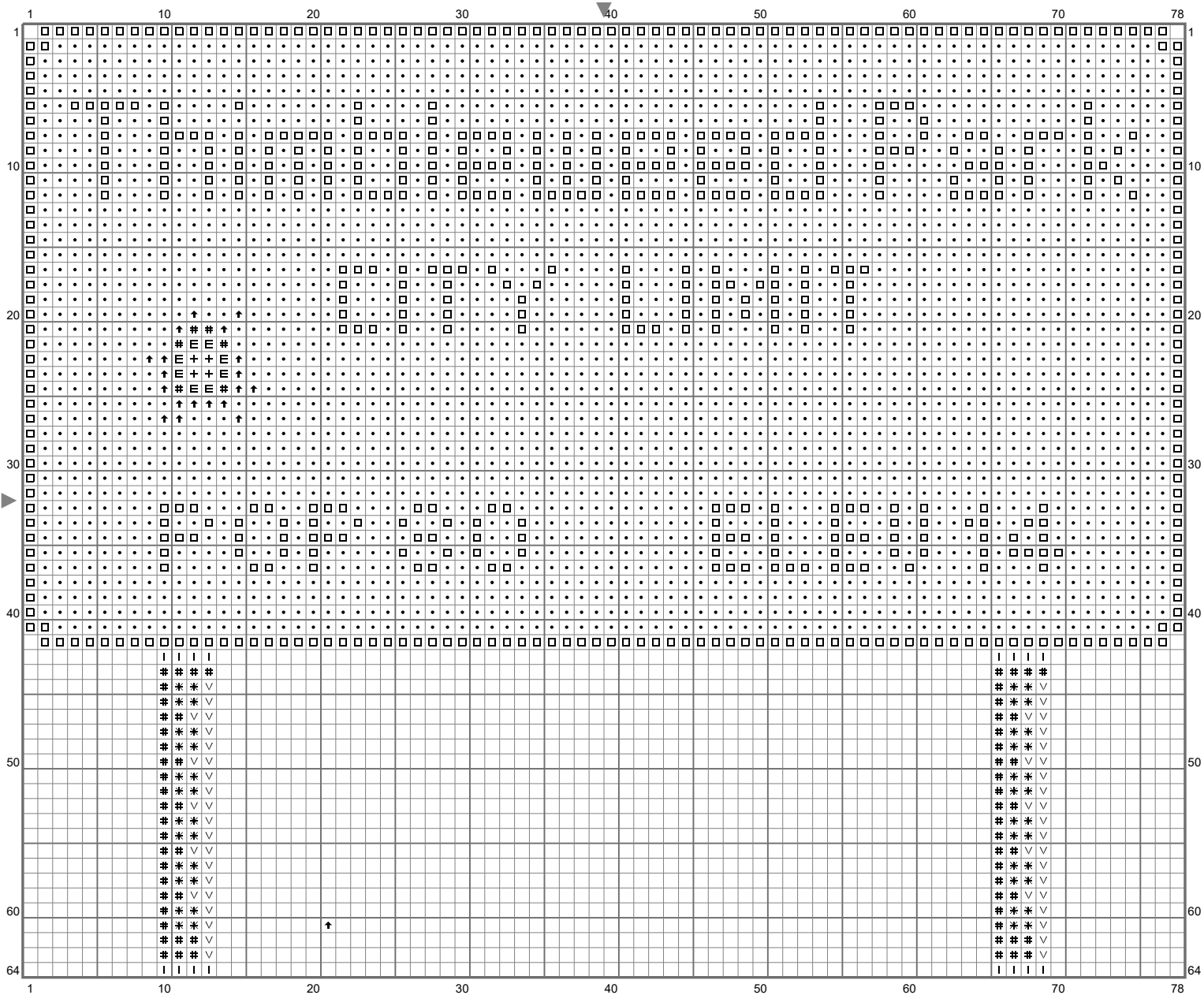


# Thimbleweed Park Sign

Copyright (C) 2018 Emily Morganti



# Thimbleweed Park Sign

Copyright (C) 2018 Emily Morganti

Stitch Count: 78w x 64h

Finished Size: 11.00 cm x 9.03 cm (18 ct./inch)










Cloth: Anne Cloth

Cloth's Color: White

# of colors: 9 Colors

## Color Table (DMC)

### **Cross Stitch**

 B5200 (600 ct)
 310 (4 ct)
 535 (8 ct)
 561 (2635 ct)
 645 (16 ct)
 646 (70 ct)
 647 (48 ct)
 648 (20 ct)
 939 (48 ct)

## Comment

NOTE: Two skeins of 561 are needed for this design.

Thimbleweed Park cross stitch chart created by Emily Morganti (<http://www.emilymorganti.com/thimblecharts>).

This free pattern may not be used for commercial purposes.

In a town like Thimbleweed Park a dead body is the least of your problems.

Learn more at: <http://www.thimbleweedpark.com>