



Ship last of  
May or first  
of June

## HEIRLOOM QUALITY MINIATURE HOUSES . . .

**DOLL FAIRE MINIATURES  
VICTORIAN TIMES  
2310 MONUMENT BLVD  
PLEASANT HILL, CA 94523  
510-680-1993 FAX 510-932-8711**

### DOLL FAIRE MINIATURE'S VICTORIAN TIMES PROUDLY PRESENT HEIRLOOM QUALITY HOUSES AUTHENTICALLY DESIGNED.

THE UNFINISHED HOUSE SHELLS ARE CONSTRUCTED OF THE FINEST 3/8 " MATERIALS AVAILABLE AND COME FULLY ASSEMBLED. THE WINDOW AND DOOR OPENINGS ARE STANDARDIZED FOR THE USE OF MANUFACTURED COMPONENTS AVAILABLE AT YOUR LOCAL MINIATURE SHOPS. ALL INTERIOR ROOMS ARE EASY TO DECORATE FROM THE BACK OR SIDE. SOME OF THE PARTITIONS ARE REMOVABLE TO ALLOW FOR EASE IN FINISHING. WE AT DOLL FAIRE ARE DEVOTED TO PROVIDING MINIATURISTS WITH THE MOST INNOVATIVE HOUSE DESIGNS ON THE MARKET. OUR MINIATURE HOUSE SHELLS WILL GIVE YOU HOURS OF CREATIVE ENJOYMENT.

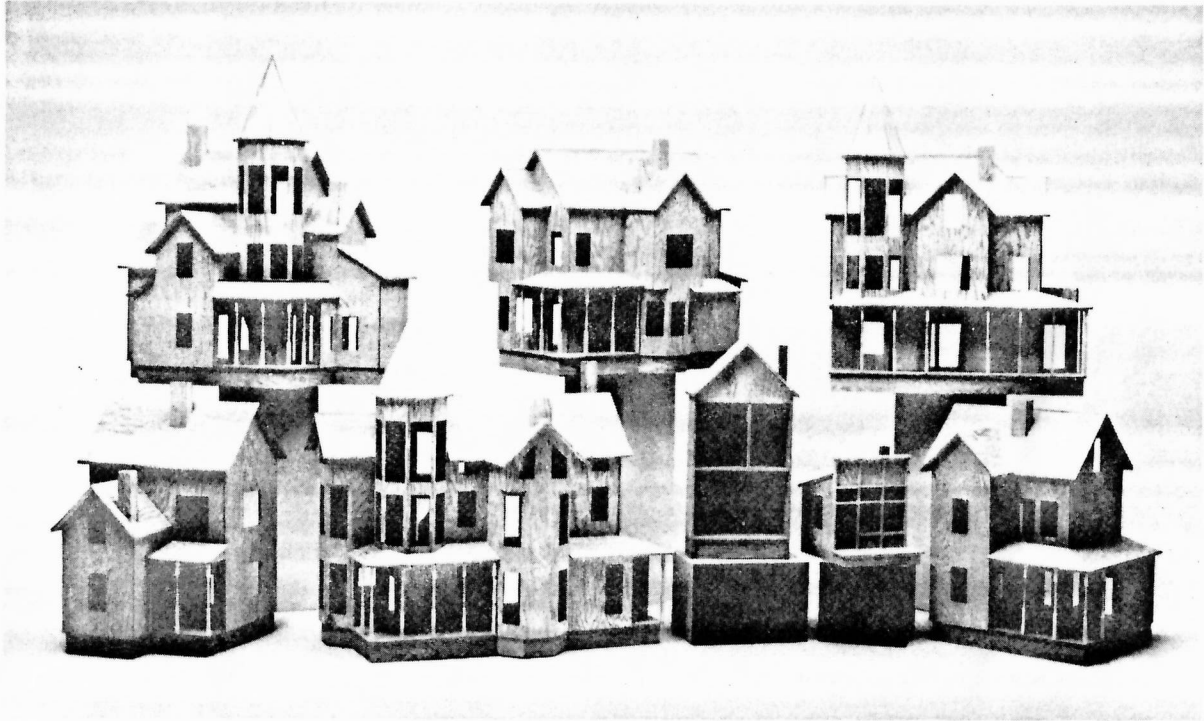
THANKS FOR REQUESTING OUR CATALOG.

IN CHRIST, CHUCK & K.C,

ELLIOTT BAY HOUSE

KNAPP HOUSE

LACAMAS LAKE HOUSE



BEE TREE HOUSE

JOSEPH ANGEL HOUSE

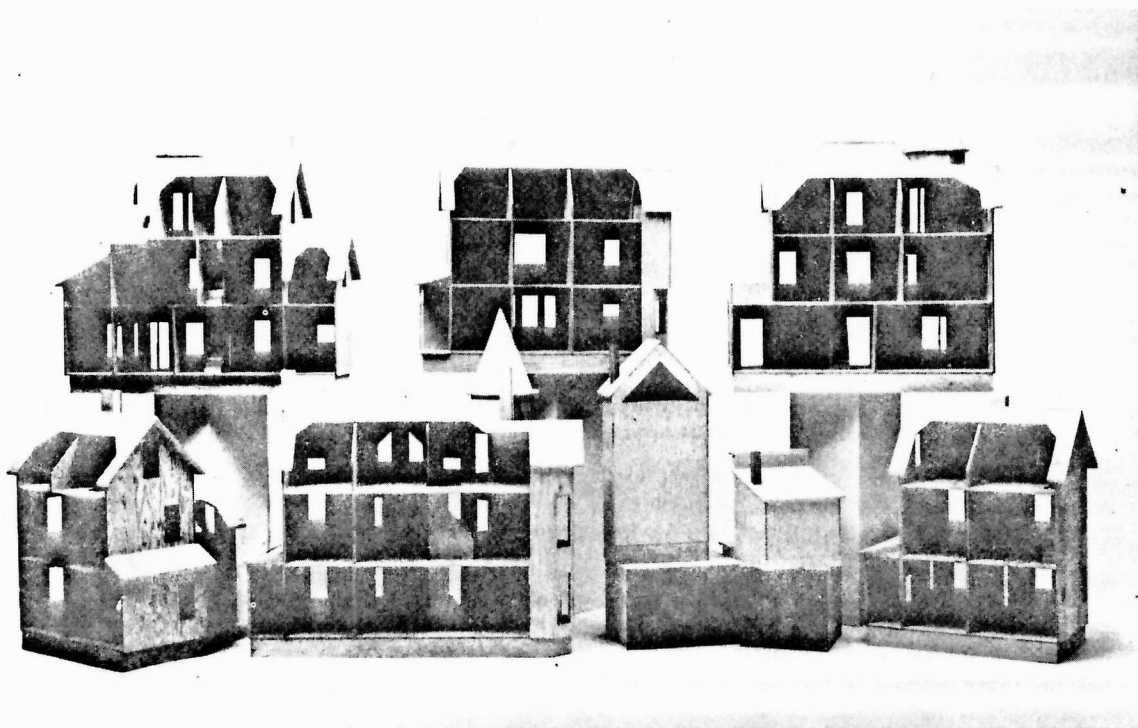
SMALLER ITEMS

COOK HOUSE

ELLIOTT BAY HOUSE

KNAPP HOUSE

LACAMAS LAKE HOUSE

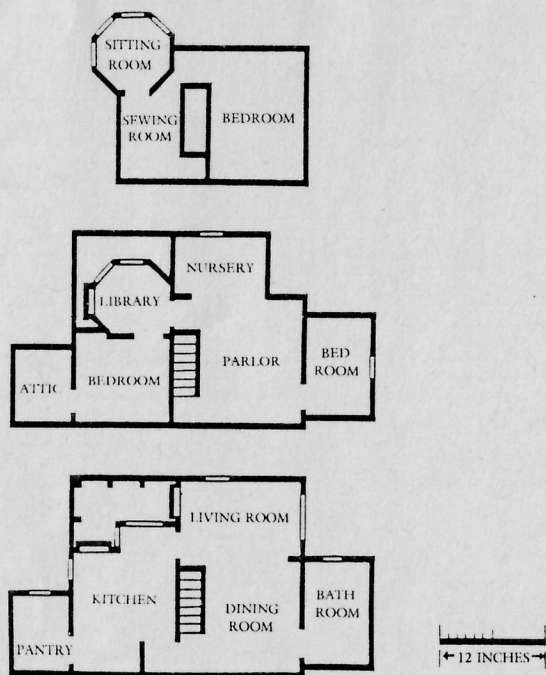


BEE TREE HOUSE

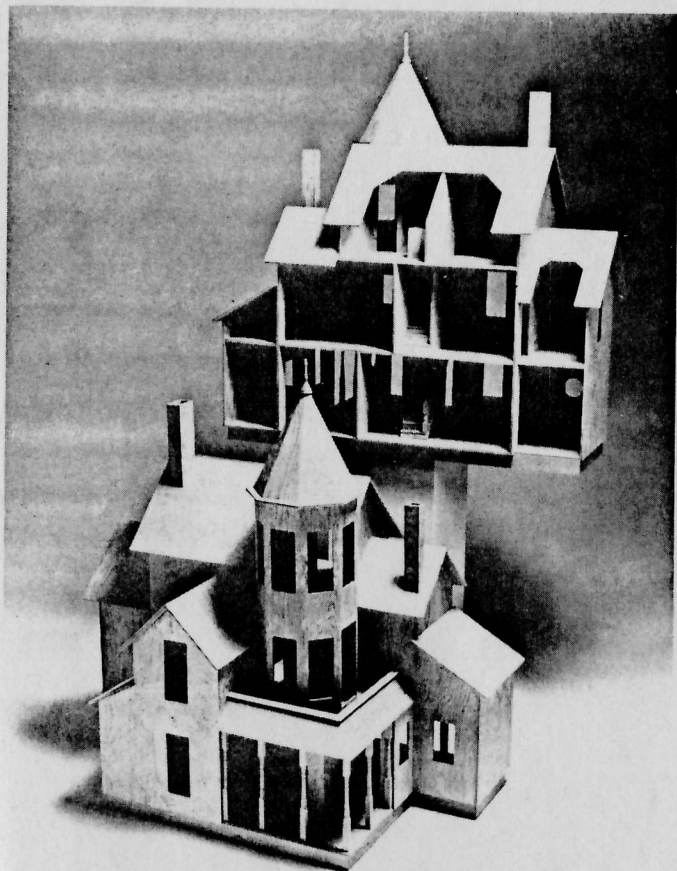
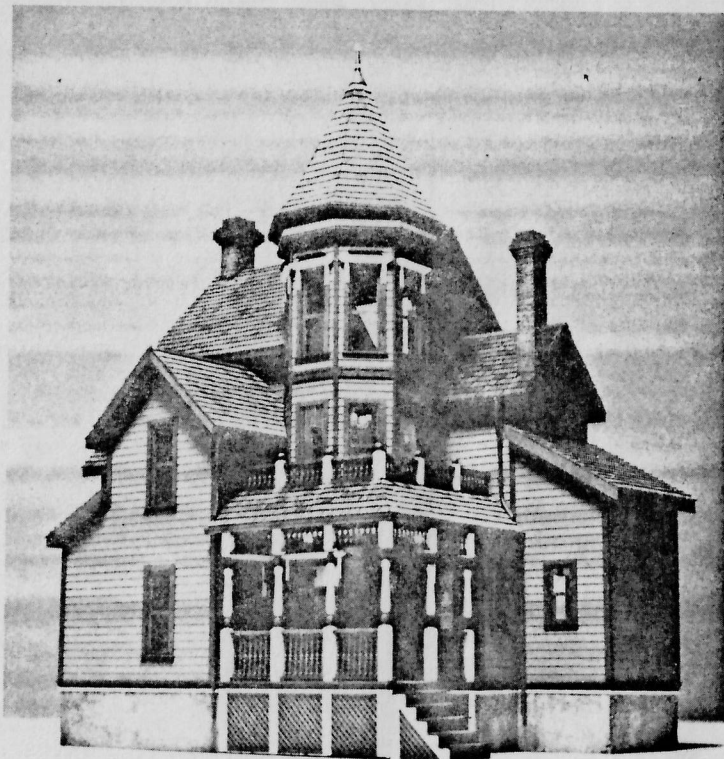
JOSEPH ANGEL HOUSE

SMALLER ITEMS

COOK HOUSE



ELLIOTT BAY HOUSE

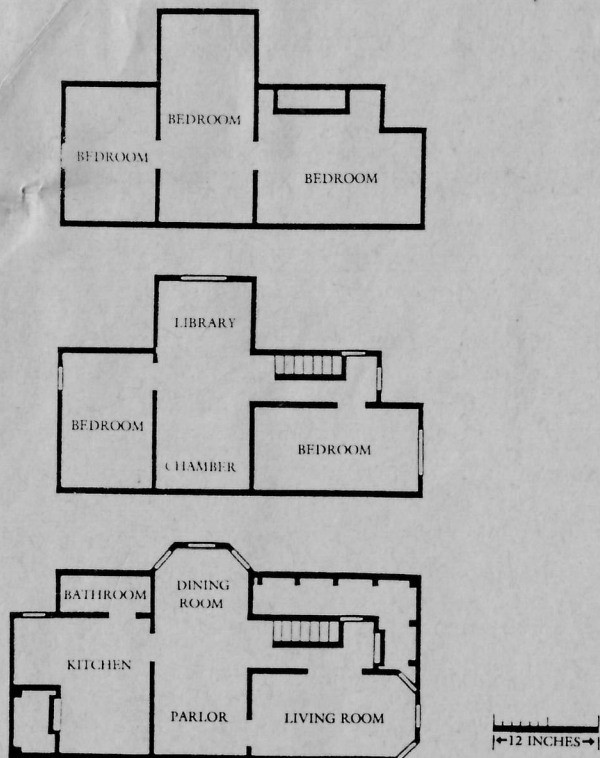


ELLIOTT BAY HOUSE #105

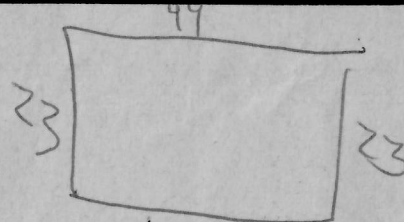
This beautiful Victorian Miniature house design originated from a home built near Elliott Bay on Puget Sound in the late 1800's. It has become well-known in this era also as it was seen on the cover of "The 4th Edition of the Miniatures Catalog". Although it no longer stands as an original full sized house, it has been reproduced as a miniature house of true heirloom quality, as well as a collectable investment. Striking points of this fourteen (14) room house are an open walk above the porch, an attic above the pantry, and a second story library in the tower.

41"W. 42"H. 23"D.  
APPROXIMATE WEIGHT 35 lbs.

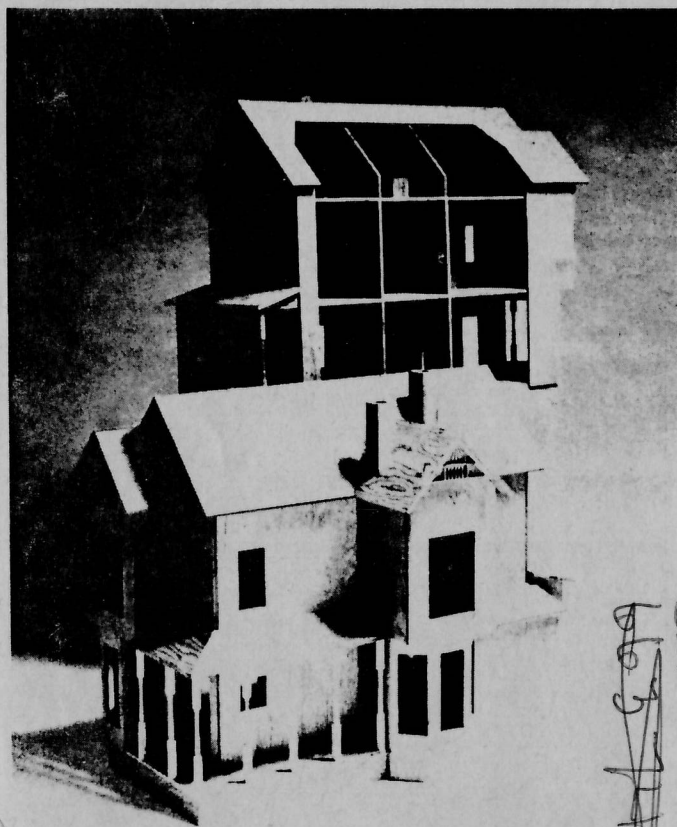




Lacamas Lake

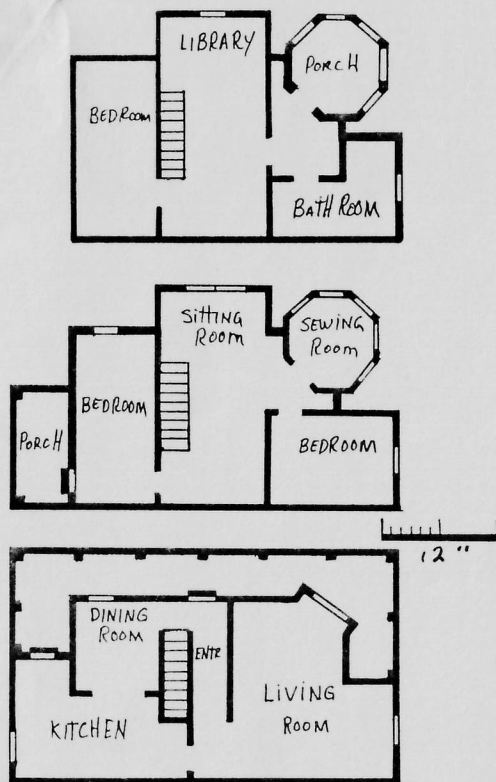


LACAMAS LAKE HOUSE #104

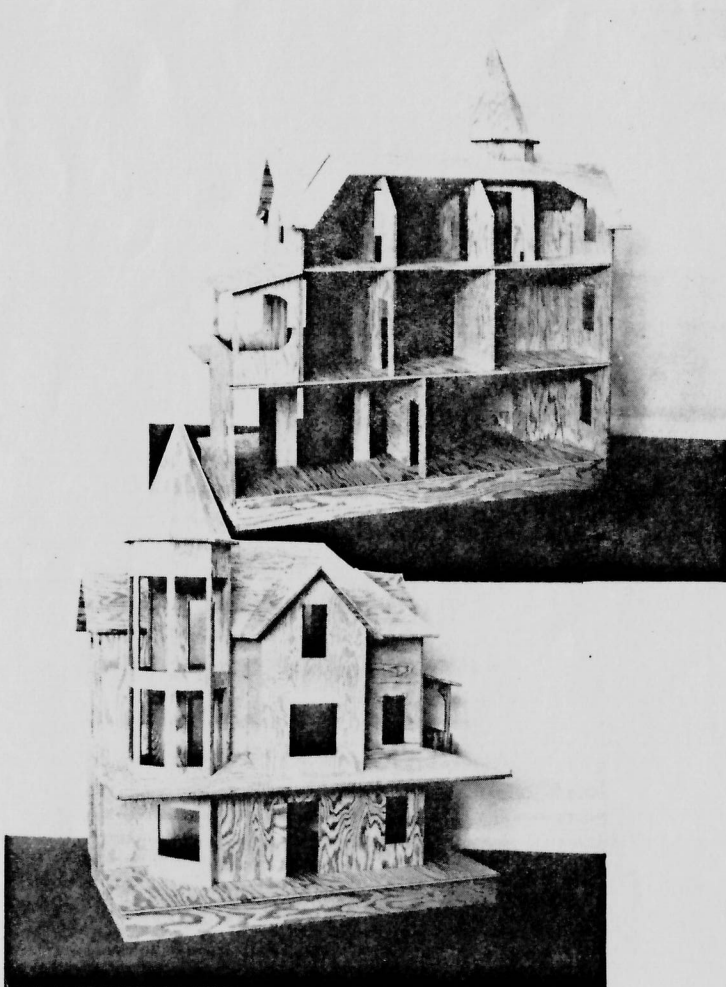


This twelve (12) room house was inspired by the Ledbetter home in Southwest Washington State. Nestled on the north bank overlooking Lacamas Lake, it was fairly isolated in its day with roughly two miles to the nearest neighbor at Prune Hill. Presented as a wedding gift to a favored son and his wife, the building of the Ledbetter House was accomplished despite heavy timber growth in the area and poor roads. The house has large rooms, 2 porches front and back, and bathroom addition.

44"W. 34"H. 23"D.  
APPROXIMATE WEIGHT 45 lbs.



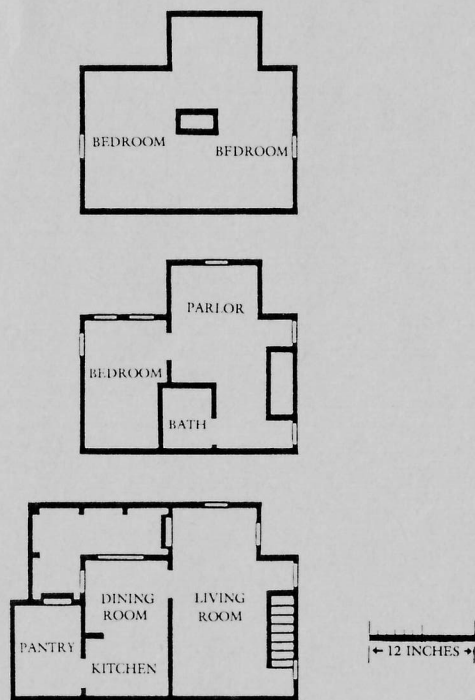
The Knapp House



### The Knapp House #108

You think pre-fab is new. This miniature house is patterned after a full size Sears catalog house of 1910. The pre-cut kit cost was \$2500.00 and was shipped to your lot. All you did was provide a foundation and assemble the kit. This house has 11 large rooms, 2 window walks, wrap around porch and traditional tower.

39''W x 52''H x 23''D  
Approx. Wt. 45 lb.



Cook Farm House

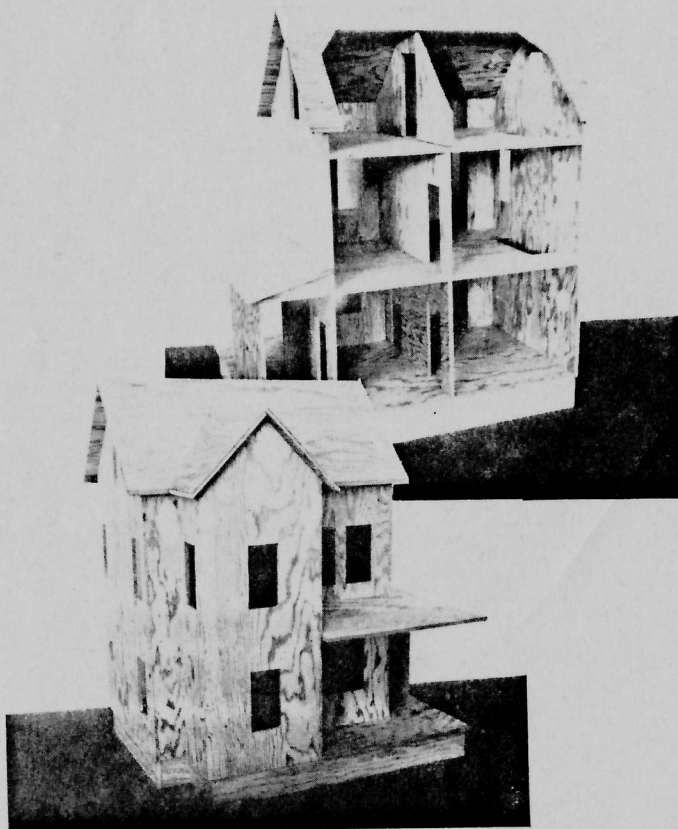


COOK FARM HOUSE

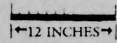
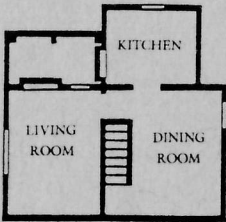
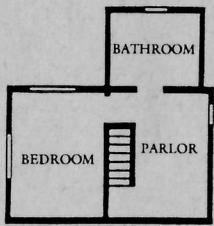
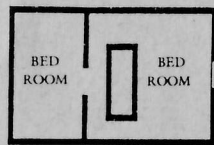
#102

This nine (9) room Farmhouse is typical of many built before the turn of the century in the Pacific-Northwest. Our replica in miniature was inspired by a particular home built in the Tillamook Forest in Oregon State by Henry Aloysius Cook. Unfortunately, shortly after being built, their house was totally destroyed by a forest fire. Undaunted, they built again. Although an original house no longer stands that the Cook family lived in, the descendants of the family live in a modern house about a mile from the location of the original homestead.

33"W. 30"H. 22"D.  
APPROXIMATE WEIGHT 30 lbs.







Bee Tree House



BEE TREE HOUSE

#101

Does Bee Tree sound like an unusual name for a community? Finding an easily accessible hive of honey bees was like finding a hundred pound sack of sugar to early settlers Edwin & Belinda Batchelor. Among the first to build a house here in Washington Territory in the early 1880's, they built their modest eight (8) room house near the bee tree. Thus the name was derived from an important natural resource for the community. This is a perfectly quaint Country Farmhouse.

25"W. 32"H. 23"D.  
APPROXIMATE WEIGHT 30 lbs.



Joseph Angel House #109

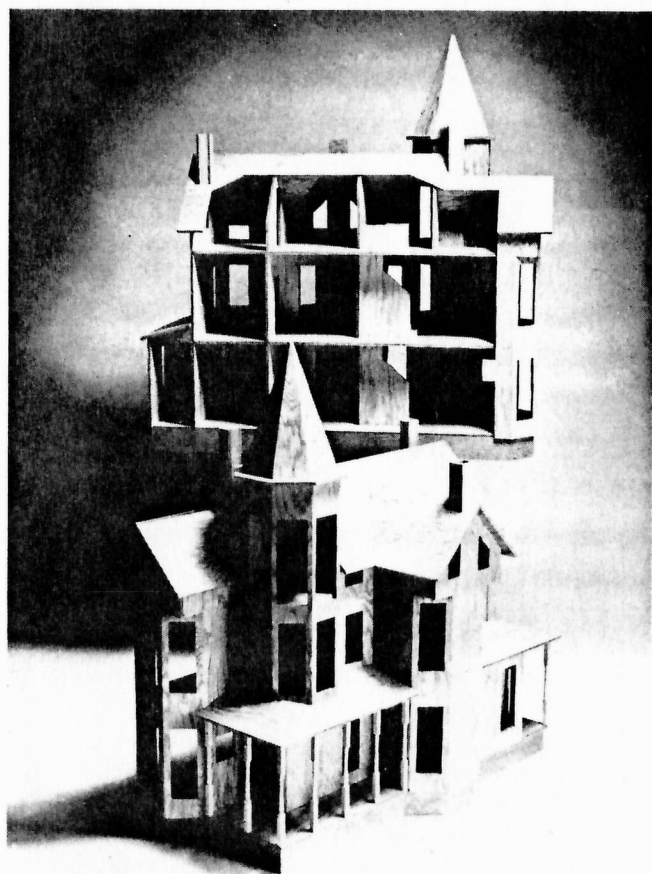


JOSEPH ANGEL HOUSE

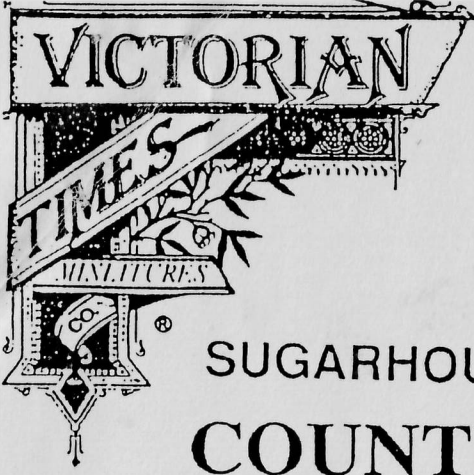
#109

This miniature reproduction is a Victorian mansion that was perched high in the west hills of Portland, Oregon in 1883. The simplicity of plan, and the balanced manner in which the design expresses it, is fairly shown in its picturesque exterior. When completely finished, its constructive features are fully represented in the gables, cresting, finials, chimneys and porches. Interior features include 16 large rooms, open tower, attic, conservatory and large entry hall. Limited edition - each signed, numbered and deeded to the owner.

DIMENSIONS: 48"W, 52"H, 23"D  
APPROXIMATE WEIGHT: 45 lbs.  
CEILING HEIGHT: 10"





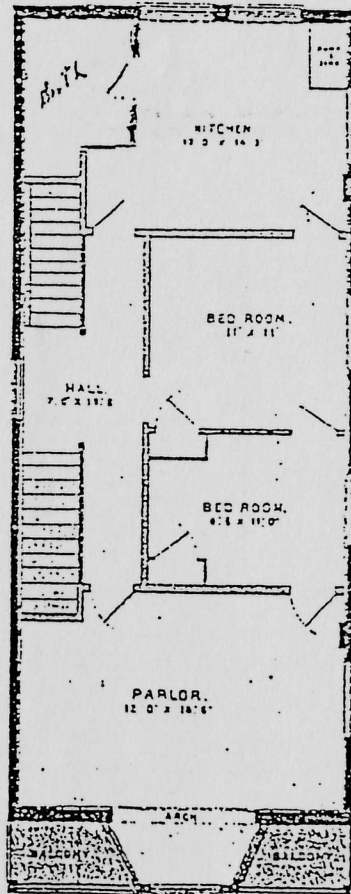
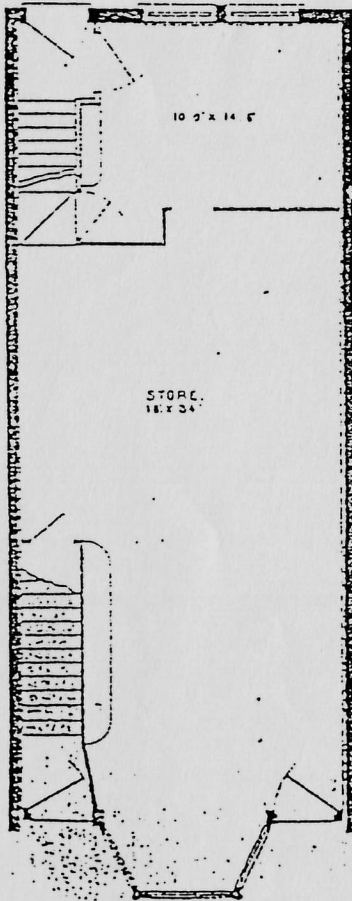
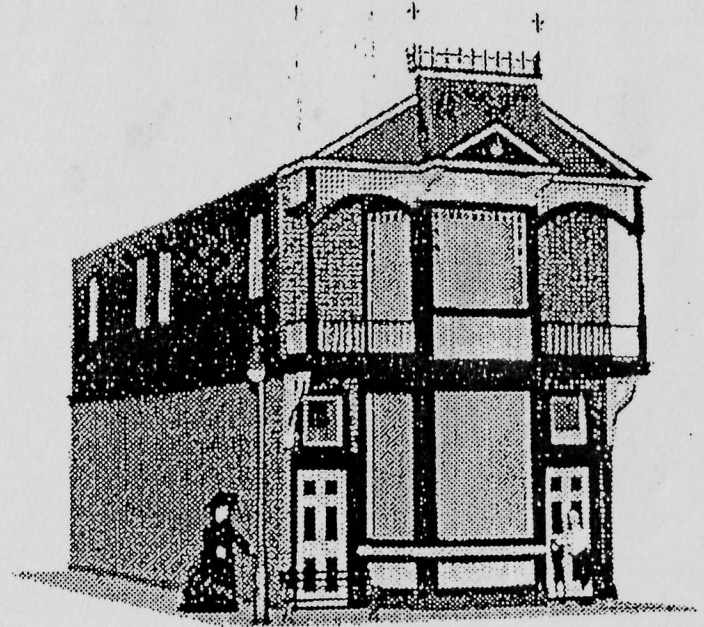


# INTRODUCING

# 110

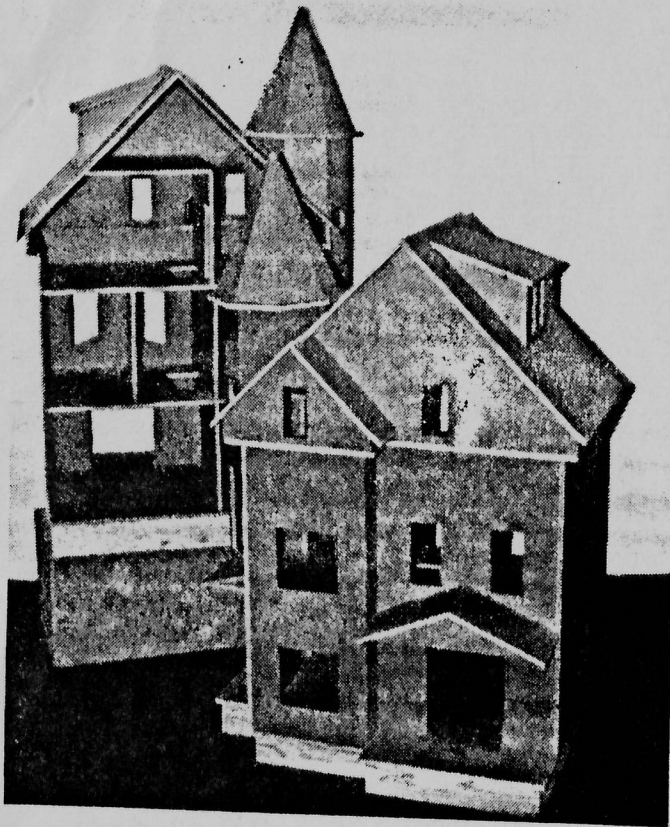
## SUGARHOUSE COUNTRY VICTORIAN STORE

Turn of the Century  
American Dream,  
Large Store with 2  
Bedroom Flat upstairs.



Specifications: 31"H x 53"W x 25"D. 2 floors, 3 rooms in store, 5 rooms in upstairs apartment. Nail and glue construction. Removable partitions for ease of finishing when ordered as unfinished shell. Material: 3/8" M.D.O. plywood. This Victorian store was designed for those with a large collection of goods for a store but would like to decorate a house as well. The turn of the century American dream was to have your house above your store.

First Floor    Second Floor



This smaller tower house is designed for those with limited space.

It was inspired by many small Victorian houses in the old mining town of Park City, Utah; now a favorite ski area for skiers from all over the world.

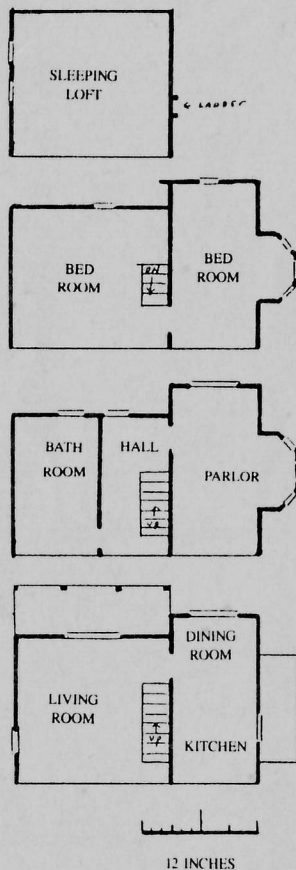
This eight (8) room house has a side porch that can also be made into a pantry or screened for an old back porch. (see Aug. '88 N.N.)

Specifications: 32"W. 21"D. 51"H., 8 rooms (or 9) with sleeping loft in attic. Made of  $\frac{3}{8}$ " MDO plywood, nailed and glued. Completely assembled or finished inside or out.

32"W. 21"D. 51"H.

© 1989 V.T.M.C.

See Floor Plan on back.



The Park City House





**LOOK!**

This Authentic  
San Francisco  
Painted Lady  
Shell or Finished.



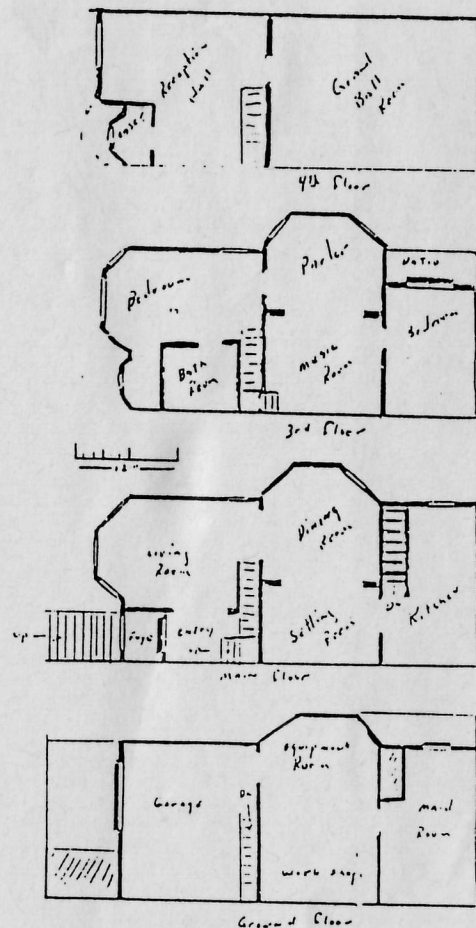
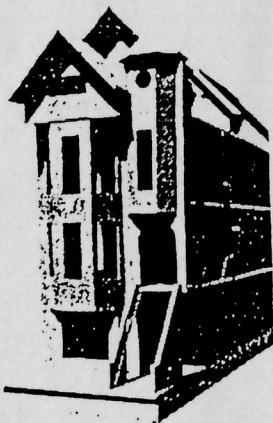
## The Golden Gate Ave House

4 Story 17 Rooms

Grand Ball Room  
on 4th floor  
55" x 24" x 48"

for information  
call or write

**DOLL FAIRE MINIATURES**  
**VICTORIAN TIMES**  
2310 MONUMENT BLVD  
PLEASANT HILL, CA 94523  
510-680-1993 FAX 510-932-8711



### DOLL FAIRE - VICTORIAN TIMES MINIATURES

NO	HOUSE TOTAL	PRICE	AMT.	ORDERED BY	DATE
101	BEETREE HOUSE	\$195.00		NAME	
102	COOK FARM HOUSE	195.00		ADDRESS	
103	PARK CITY	275.00		CITY	
104	LACAMAS LAKE	295.00		STATE	ZIP
105	ELLIOTT BAY	375.00		PHONE (      )	-
108	THE KNAPP HOUSE	395.00			
109	JOSEPH ANGEL	395.00			
110	SUGARHOUSE STORE	295.00		SHIP TO A DIFFERENT ADDRESS	
111	GOLDEN GATE AVE.	445.00		NAME	
203	WALL HOUSE	75.00		ADDRESS	
204	SILVERTON STORE	95.00		CITY	
	HOUSE TOTAL			STATE	ZIP
	BOXING	50.00		PHONE	
	TOTAL			MASTER CARD / VISA NUMBER	

50 % DEPOSIT AMOUNT

**CHIMNEYS AS PICTURED ARE NOT INCLUDED    EXPIRATION DATE**

ALL HOUSES SHIPPED FREIGHT COLLECT. DEPOSIT AMOUNT TO BE ONE HALF OF TOTAL OWED  
BALANCE DUE WHEN HOUSE IS READY FOR SHIPMENT. FREIGHT COMPANIES INSURE THE HOUSES FOR  
SAFE DELIVERY.

DOLLFAIRE MINIATURES -VICTORIAN TIMES

2310 MONUMENT BLVD. PLEASANT HILL, CA. 94523    510-680-1993    A/P-FAX 510-932-8711